

# An introduction to OpenStreetMap and some use in research

Luca Delucchi

Fondazione Edmund Mach - GIS & Remote Sensing Unit;  
<http://gis.cri.fmach.it>

Geoinformatics FCE CTU 2012, Praha



# Introduction

## About

OpenStreetMap is:

- a collaborative geographic project, it was created for road maps, but it grew up and now it's the biggest free geographic database



# Introduction

## About

OpenStreetMap is:

- a collaborative geographic project, it was created for road maps, but it grew up and now it's the biggest free geographic database
- like Wikipedia for geographic data; the success of project thanks to the minor cost of technology to use (internet and GPS)



# Introduction

## What is not

OpenStreetMap is not:

- it's not a GPS tracks collector

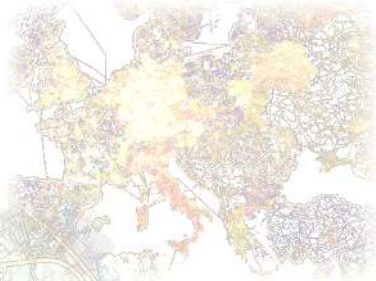


# Introduction

## What is not

OpenStreetMap is not:

- it's not a GPS tracks collector
- it's not a Google Maps copy



# Introduction

## Why

OpenStreetMap was created because in 2004 most of geographic data was not free, you had to pay or sign some licenses that limited your freedom.



# Introduction

## Why

OpenStreetMap was created because in 2004 most of geographic data was not free, you had to pay or sign some licenses that limited your freedom.



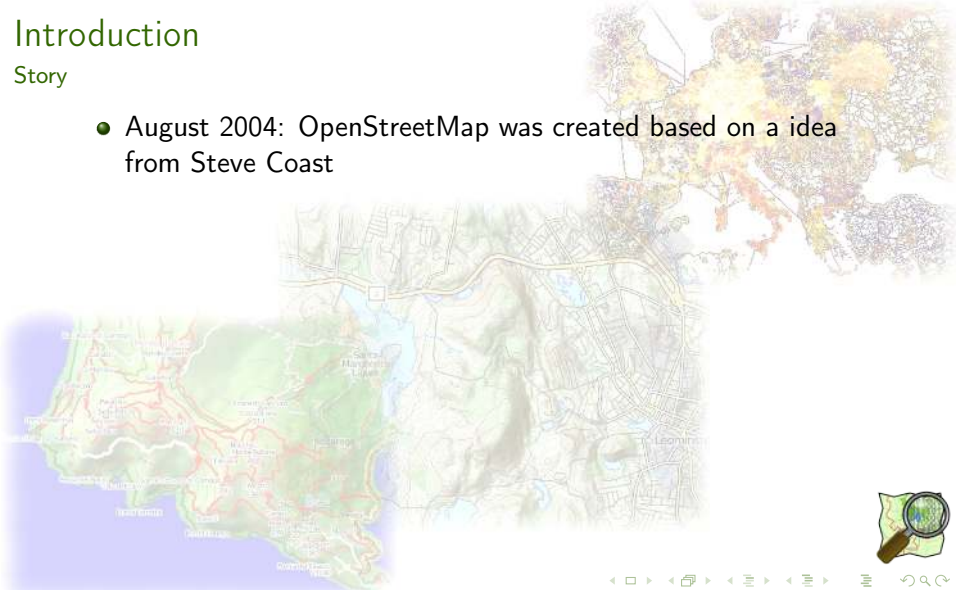
ODbL License



# Introduction

## Story

- August 2004: OpenStreetMap was created based on a idea from Steve Coast





# Introduction

## Story

- August 2004: OpenStreetMap was created based on a idea from Steve Coast
- Christmas Day 2005: 1000 registered user



# Introduction

## Story

- August 2004: OpenStreetMap was created based on a idea from Steve Coast
- Christmas Day 2005: 1000 registered user
- January 2006: JOSM editor was started



# Introduction

## Story

- August 2004: OpenStreetMap was created based on a idea from Steve Coast
- Christmas Day 2005: 1000 registered user
- January 2006: JOSM editor was started
- May 2006: first mapping party in Isle of Wight



# Introduction

## Story

- August 2004: OpenStreetMap was created based on a idea from Steve Coast
- Christmas Day 2005: 1000 registered user
- January 2006: JOSM editor was started
- May 2006: first mapping party in Isle of Wight
- July 2007: first State of the Map (SOTM) in Manchester



# Introduction

## Story

- August 2004: OpenStreetMap was created based on a idea from Steve Coast
- Christmas Day 2005: 1000 registered user
- January 2006: JOSM editor was started
- May 2006: first mapping party in Isle of Wight
- July 2007: first State of the Map (SOTM) in Manchester
- September 2007: import of TIGER data (USA), AND donates Netherlands, India and China



# Introduction

## Story

- August 2004: OpenStreetMap was created based on a idea from Steve Coast
- Christmas Day 2005: 1000 registered user
- January 2006: JOSM editor was started
- May 2006: first mapping party in Isle of Wight
- July 2007: first State of the Map (SOTM) in Manchester
- September 2007: import of TIGER data (USA), AND donates Netherlands, India and China
- 2008: first scientific pubblications about OpenStreetMap



# Introduction

## Story

- August 2004: OpenStreetMap was created based on a idea from Steve Coast
- Christmas Day 2005: 1000 registered user
- January 2006: JOSM editor was started
- May 2006: first mapping party in Isle of Wight
- July 2007: first State of the Map (SOTM) in Manchester
- September 2007: import of TIGER data (USA), AND donates Netherlands, India and China
- 2008: first scientific pubblications about OpenStreetMap
- 2009: Humanitarian OpenStreetMap Team



# Introduction

## Story

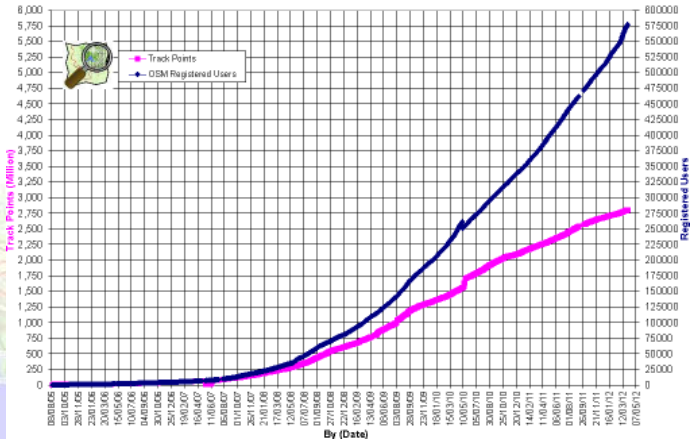
- August 2004: OpenStreetMap was created based on a idea from Steve Coast
- Christmas Day 2005: 1000 registered user
- January 2006: JOSM editor was started
- May 2006: first mapping party in Isle of Wight
- July 2007: first State of the Map (SOTM) in Manchester
- September 2007: import of TIGER data (USA), AND donates Netherlands, India and China
- 2008: first scientific pubblications about OpenStreetMap
- 2009: Humanitarian OpenStreetMap Team
- November 2011: 500.000 registred user



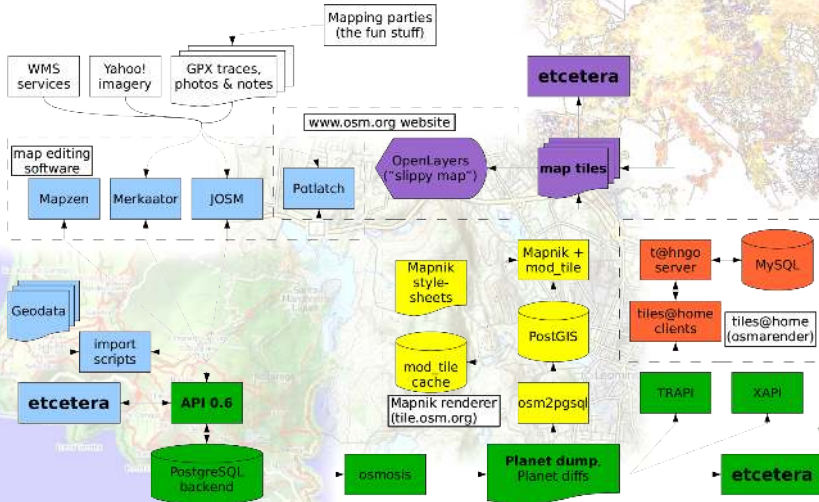


# Introduction Story

OpenStreetMap Database Statistics  
Users and User gpx Uploads (track points)



# Component overview



# Components

## Quality check

Quality is one of more important element of OpenStreetMap ...



# Components

## Quality check

Quality is one of more important element of OpenStreetMap ...  
Quality check is done by:



# Components

## Quality check

Quality is one of more important element of OpenStreetMap ...  
Quality check is done by:

- trust, I can identify the user that did changes



# Components

## Quality check

Quality is one of more important element of OpenStreetMap ...

Quality check is done by:

- trust, I can identify the user that did changes
- check by other contributors (peer review), software is available to help with this work:  
openstreetbugs, OWL, duplicate nodes, OSM Inspector



# Components

## Quality check

Quality is one of more important element of OpenStreetMap ...

Quality check is done by:

- trust, I can identify the user that did changes
- check by other contributors (peer review), software is available to help with this work:  
openstreetbugs, OWL, duplicate nodes, OSM Inspector
- scripts, for automatic fixing



# Why contribute

## Fun

- It's funny...





# Why contribute

## Fun

- It's funny...
- ...you can explore places close to you that you didn't know yet...



# Why contribute

## Fun

- It's funny...
- ... you can explore places close to you that you didn't know yet...
- ... you can map during your outdoor sport (bicycle, hiking, run, etc.)...



# Why contribute

## Fun

- It's funny...
- ... you can explore places close to you that you didn't know yet...
- ... you can map during your outdoor sport (bicycle, hiking, run, etc.)...
- ... **Warning:**  
**OpenStreetMap can create addicted people :-)**



# Why contribute

## Humanitarian help

HOT = Humanitaria OpenStreetMap Team



(c) Erica 'junipermarie' - licenza cc-nc-sa



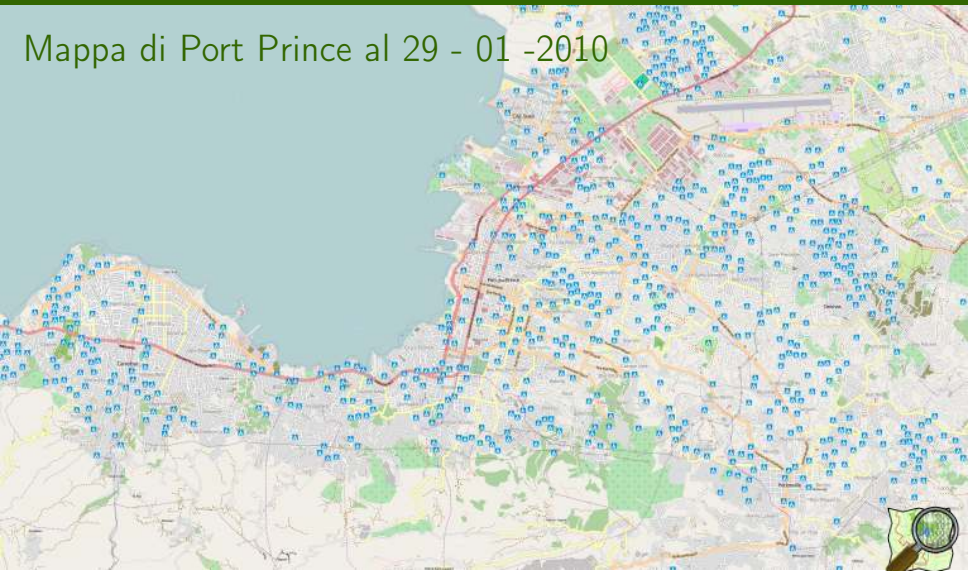
(c) Fairfax County Urban Search & Rescue Team



# Mappa di Port Prince al 30 - 12 -2009



# Mappa di Port Prince al 29 - 01 - 2010



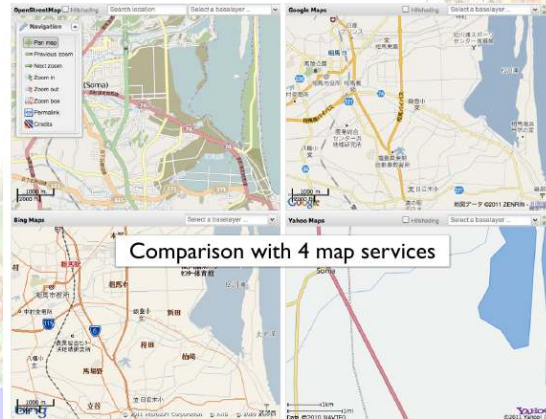
# Mapa di Port Prince al 29 - 01 -2010

MapAction coordinator

Without a doubt, OpenStreetMap has helped to save lives.

# Why contribute Humanitarian help

## Japan





# Why contribute

## Professional applications

OpenStreetMap is increasingly used in commercial and professional applications.

<http://switch2osm.org>



# Why contribute

## Professional applications

OpenStreetMap is increasingly used in commercial and professional applications.

- replace proprietary solution for webGIS using OpenLayers/Leaflet libraries with several tiles repository

<http://switch2osm.org>



# Why contribute

## Professional applications

OpenStreetMap is increasingly used in commercial and professional applications.

- replace proprietary solution for webGIS using OpenLayers/Leaflet libraries with several tiles repository
- routing applications

<http://switch2osm.org>



# Why contribute

## Professional applications

OpenStreetMap is increasingly used in commercial and professional applications.

- replace proprietary solution for webGIS using OpenLayers/Leaflet libraries with several tiles repository
- routing applications
- mobile applications

<http://switch2osm.org>



# Why contribute

## Professional applications

OpenStreetMap is increasingly used in commercial and professional applications.

- replace proprietary solution for webGIS using OpenLayers/Leaflet libraries with several tiles repository
- routing applications
- mobile applications
- a lot analysis using raw data

<http://switch2osm.org>



# Use data Web



Acesap  
webGIS  
Fondazione  
Edmund Mach



Introduction  
Components  
Why contribute  
Use data  
Community

Web  
Base layer  
Routing  
Social

# Use data Web



Acesap  
webGIS  
Fondazione  
Edmund Mach

HarvAssist  
Fondazione  
Edmund Mach



# Use data

## Base layer



Fondazione Edmund Mach

Created by GRASS Cartographic Composer developed by Anna Kratochvilova





# Use data Routing



# Use data Routing



OpenTripPlanner

Wheelchair  
routing  
GIScience  
Heidelberg  
University

Route nach Post: 7.006973 50.737262  
Route Beschränkung

Informationen zur Route

- Strecke: 2043,7 m
- Gesamtd: 23 Minuten (bei Durch)

Nr. Fahrtrichtung	Strecke
1. Start (Postfach)	2,0 m
2. Fahrt links auf Ankerstraße	113,0 m
3. Fahrt links	68,0 m
4. Fahrt rechts	1,0 m
5. Fahrt rechts	60,0 m
6. Fahrt rechts	119,0 m
7. Fahrt rechts auf Hauptstraße	91,0 m
8. Fahrt links auf Spargelstraße	174,0 m
9. Fahrt rechts auf Graben-Hausberg	502,0 m
10. Fahrt links auf Rosenstraße	195,0 m

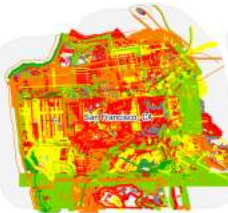


# Use data Social

### Community score card

- 95% of edits done by 12% of users
- 9% untouched TIGER
- 4.8 avg version increase of TIGER made
- 8.3% of features touched in last 3 months, 40% in last year

77°



OpenStreetMap  
Temperature  
Martijn van Exel



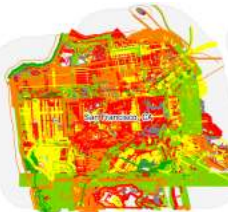
# Use data

## Social

### Community score card

- 95% of edits done by 12% of users
- 9% untouched TIGER
- 4.8 avg version increase of TIGER roads
- 8.3% of features touched in last 3 months, 40% in last year

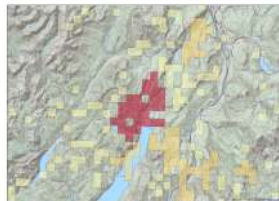
77°



## OpenStreetMap Temperature Martijn van Exel



## OpenStreetMap MPV Maurizio Napolitano (Napò)



## Some links

[www.openstreetmap.org](http://www.openstreetmap.org)

mail: [http://wiki.openstreetmap.org/wiki/Mailing\\_lists](http://wiki.openstreetmap.org/wiki/Mailing_lists)

irc: <http://wiki.openstreetmap.org/wiki/IRC>

wiki: <http://wiki.openstreetmap.org/wiki>

forum: <http://forum.openstreetmap.org/>

help: <http://help.openstreetmap.org/>

research: <http://wiki.openstreetmap.org/wiki/Research>



# Community

Thanks to...

Steve Coast, Simone Cortesi, Schuyler Erle, GIScience Heidelberg University, Edoardo Marascalchi, Mikel Maron, Maurizio Napolitano, Ivan Sanchez Ortega, David Paleino, Frederick Ramm, Niccolò Rigacci, Dane Springmeyer, University College London, Martijn van Exel.....



Thanks for your attention

Map license *"Map data (c) OpenStreetMap (and) contributors,  
CC-BY-SA"*

This work is released under Creative Commons Attribution 3.0

